

Vibratory Roller XS125



XCMG FOR YOUR SUCCESS

Machine dimension(standard):236x92x118in

Machine weight(standard): 26455lb





INTRODUCTION OF XCMG

Founded in 1943, XCMG is the largest enterprise in the Chinese construction machinery industry. We offer the most diverse product line and the highest technological standards. We provide a comprehensive set of construction solutions, and we are the most internationally competitive firm in the industry. On KHL Yellow Table, we rank No. 1 in China and No.3 globally.

Across our offices in China, the US, Germany, India, and Brazil, XCMG has established a global collaborative research platform including national-level R&D facilities focused on advanced smart manufacturing technology. Our R&D team consists of top talents from around the globe. They are researching cutting-edge technologies such as new energy, unmanned driving and high-end parts. Our work has earned us numerous international patents and awards.

XCMG has the most comprehensive product line, meaning we can offer fully comprehensive solutions in 9 areas: hoisting, earthwork, road building & maintenance, mining, concrete & paving, tunnel-building & underground construction, high-altitude firefighting equipment & special-purpose vehicles, railway & bridge construction, sanitation engineering. All these solutions can be customized to suit our customers' needs.

At XCMG, our five-continent sales network gives our products worldwide visibility. We have 300 overseas distributors, over 10 overseas manufacturing bases and KD (Knockdown) factories, and products in more than 180 countries and regions. We supply our global customers with pre-sales, mid-sales and after-sales service, and a convenient, efficient one-stop financing and leasing service. XCMG's total annual exports and overseas income consistently come top of the industry in China.

We care deeply for the welfare of the people. We support numerous charitable causes, and are quick to the scene during disaster relief efforts.

XCMG is all set to become an eternal brand with our feet on the ground and eyes on the horizon. XCMG's ambition leads us forever forwards. XCMG is scaling its Everest, and is determined to reach the top.

Highlights of XS125

> XS125/XS125PD vibratory roller is a heavy-duty, self-propelled, single-drum and full hydraulic double-drive vibratory roller developed for European market. The product meets the emission requirements of Euro-V. It has the features of large excitation force, high compaction efficiency and good compaction quality. It is widely applied in compaction of base layer, sub-base layer and rock filling for roads, railways, airports, ports, dams and industrial construction sites.



Appearance of the new 5 series single drum rollers

The whole machine adopts the latest single-drum “5” series appearance modeling, which is compact in structure and nice-looking; the waist design makes the whole machine have the best front and rear 1 × 1m good view; the fuel oil filter, hydraulic oil filter, drain oil, water hole are drawn outside to make the maintenance point in touch; reversible cab, large angle lift hood and centralized pressure measuring point make the repair of the whole machine more convenient; the whole machine is equipped with convex wheel, herringbone tire, dozer blade, reversing radar image, dozer blade, rotating alarm lamp etc., providing users with more diversified choices.





Modular design to meet a variety of construction needs

Whole Machine Hydraulic Travelling Drive System

REXTROH plunger pumps and plunger motors are adopted to compose the closed hydraulic drive system. The independently developed X-ASC anti-slip control system ensures that the roller has good driving performance and large climbing ability. It has two-gear stepless variable speed, ensuring the operation is made with the most appropriate speed under different working conditions.

Drive System

Drive axle for heavy-duty roller is adopted with tubeless tires and it can be equipped with quincuncial and herringbone patterns.

Hydraulic Vibration System

REXTROH plunger pumps and plunger motors are adopted to compose the closed hydraulic vibration system, which is dual-band and dual-amplitude. It has scientific and reasonable static line load and excitation force configurations, ensuring effective compaction is made for different types of materials and layers with different thicknesses.



Excellent front and rear view and side and rear view to ensure construction safety



Anti-roll Cab

The anti-roll cab has good sealing performance and it is equipped with radio recorder and suspension seat with large and reasonable internal storage space and equipped with large-area glass. It has wide view, providing a safe and comfortable operating environment for the driver. The roll-over cab brings a great convenience for repair; the fresh air system, air conditioner, multi-duct three-dimensional wind and defrosting provide a comfortable driving environment.

Engine Cover

The engine cover with large angle forward rolling makes the repair parts in full review.

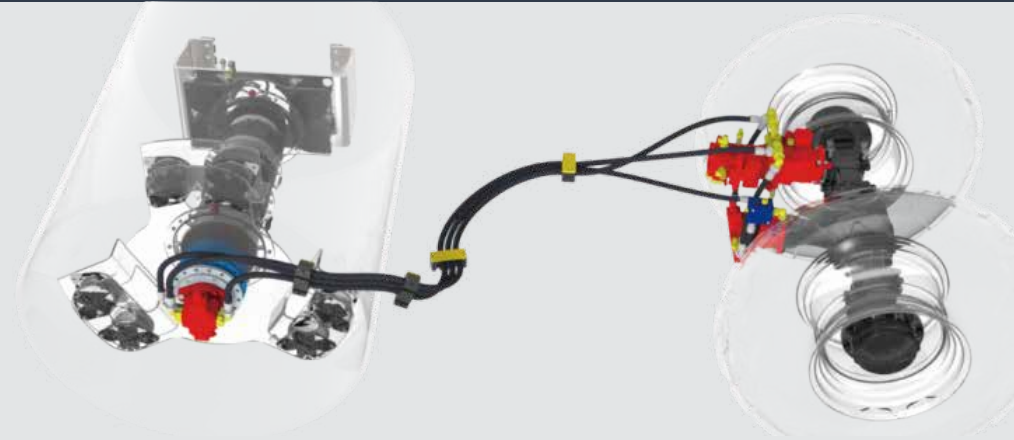


Good maneuverability

> Reasonable front and rear mass distribution, sufficient power reserve, NO-SPIN anti-differential drive axle, and the whole system is equipped with XCMG's unique automatic X-ASC anti-skid system as standard, so that the equipment can easily cope with large slope, mud and rugged operating environment.

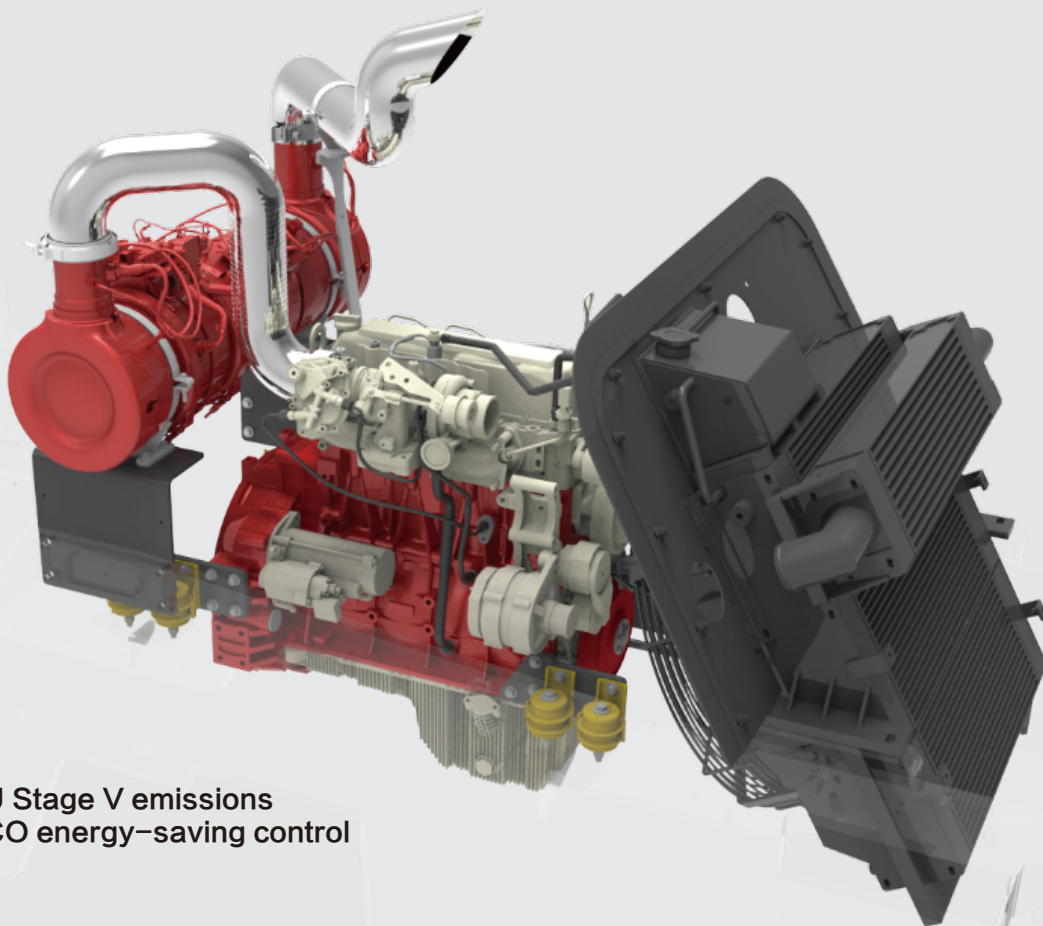
Brake System

> The drive axle, multi-disc brake on the vibratory rim reducer and the hydro-static brake of closed hydraulic system compose the brake system, which has three functions (i.e., service braking, parking braking and emergency braking), ensuring the driving is safe and reliable.



Environmental protection and energy saving

> Equipped with four-cylinder Cummins turbocharged engine meeting Stage V emission, meeting strict emission requirements and providing sufficient power for the equipment , independent heat dissipation + intelligent temperature control technology, which can make the engine work in an efficient temperature range and improve fuel utilization.



EU Stage V emissions
ECO energy-saving control

Whole Machine Power System

> It is equipped with Cummins electronic-controlled engine with water cooling, turbocharging, big power reserve, low oil consumption and small noise. DOC+DPF+SCR single-cylinder rear processor is adopted to meet the emission requirements of Euro-V and American Final Stage 4 (Tier4F); independent heat dissipation intelligent temperature control system realizes low, medium or high fan speed according to the system temperature and reduces the fuel consumption.



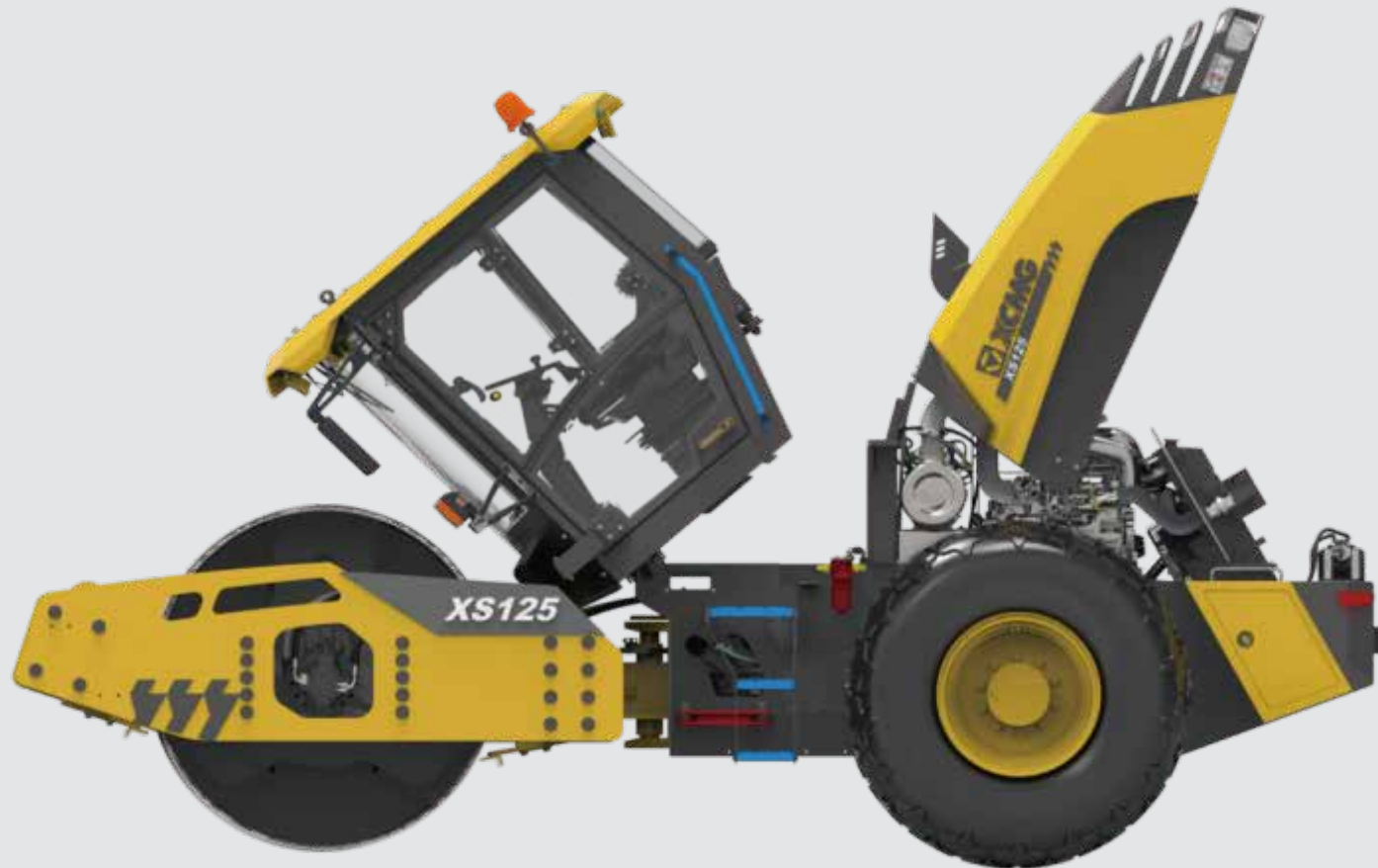
Easy maintenance and repair

Operating System

Conform to Ergonomic Layout: The suspension seat is adjustable in front, rear, top, bottom and inclined angles and it can be applied for drivers with different heights and weights; the hand control handle is combined with rotary and sliding bracket to make the driver control freely; the sound and light alarm device on the instrument panel can provide maintenance and repair information at any time to avoid equipment operation in "sickness" and prevent equipment damage.

Electrical System

Based on ergonomic principles, the structural form of front steering and right operation is adopted. The control box is integrated with color display, combination button panel, CAN bus handle, functional key group and trouble indicator lamp, engine starting switch etc., which are comfortable in operation; automatic compaction control, automatic idle control, speed limit adjustment and other intelligent elements reduce the operator's labor intensity. The seat intelligent sensing, emergency braking and engine no start switch effectively protect the driver's personal safety.



Anti-roll Cab

> The anti-roll cab has good sealing performance and it is equipped with radio recorder and suspension seat with large and reasonable internal storage space and equipped with large-area glass. It has wide view, providing a safe and comfortable operating environment for the driver. The roll-over cab brings a great convenience for repair; the fresh air system, air conditioner, multi-duct three-dimensional wind and defrosting provide a comfortable driving environment.

1. The whole system is equipped with anti-rollover cab ROPS&-FOPS as standard, which provides sufficient head and foot space while ensuring safety.
2. Large front curved glass, providing a wider view for the driver.
3. The whole system is equipped with air-conditioning as standard; three-dimensional air vents make the temperature in the cab more balanced and provide a more comfortable operating environment for the driver.
4. The whole system is equipped with fresh air system as standard, which keeps the air in the cab clean at all times.
5. The entire system is equipped with standard cab interior lighting overhead lamps.
6. The whole system is equipped with a standard broken hammer with the function of cutting short seat belt.
7. Ergonomically arranged maneuvering space, in which the suspension shock-absorbing seat can be widely adjusted forward and backward, up and down to meet the requirements of drivers of different sizes; the left and right elbow rests can be adjusted in multiple degrees of freedom to meet different operating postures.
8. Multi-point large storage space, can place water cups, cell phones, keys and other objects.
9. the rear glass is equipped with electric heating and defrosting equipment to meet the needs of winter operations.
10. The whole system is equipped with rear glass sunshade as standard, which can effectively prevent direct sunlight.
11. Double rotor steering column, making the steering operation easier.



Whole Machine

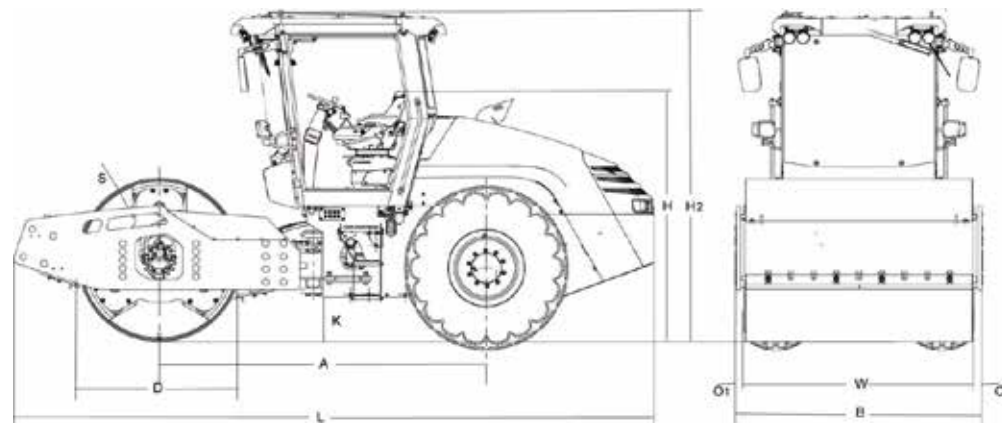


- 13、Blue grade channel, extending to the interior of the cab, more eye-catching and easily identifiable.
- 14、Hydraulic hose protection device, even if the high-pressure oil hose ruptures, it can protect the surrounding people from harm.
- 15、Cab three-dimensional vibration damping, effectively attenuate the vibration transmission of the frame, to provide a comfortable operating environment for the driver.
- 16、The whole system is equipped with working lights, traffic lights and rotating alarm lights as standard to meet the requirements of different zones.
- 17、external power terminal, can guarantee the equipment battery voltage is insufficient, the emergency start.
- 18、maintenance-free battery, the product does not need to be filled with liquid during the whole life cycle.
- 19、maintenance-free steering bearing, reduce lubrication points, reduce maintenance intensity.
- 20、assembly type articulation, easy to replace the cross articulated ends of the joint bearings.
- 21、Large fuel tank

Parameter

| Content | XS125 (Light Wheel) | XS125PD II (Assembled Convex Wheel) | XS125PD (Welded Convex Wheel) |
|--------------------------------------|--|--|--|
| Maximum operating mass | 12400kg / 27337lb | 13770kg / 30358lb | 13252kg / 29216lb |
| Operating mass | 12000kg / 26455lb | 13370kg / 30358lb | 12850kg / 28329lb |
| Assigned mass of front wheel | 7300kg / 16094lb | 8670kg / 19114lb | 8150kg / 17968lb |
| Assigned mass of rear wheel | 4700kg / 10362lb | 4700kg / 10362lb | 4700kg / 10362lb |
| Load of static line | 336N/cm | / | / |
| Operating speed | 0–11.00km/h / 0–6.84mile/h | 0–11.85km/h / 0–7.36mile/h | 0–11.85km/h / 0–7.36mile/h |
| Theoretical climbing ability | 60% | 45% | 45% |
| Minimum turning radius (inner) | 3766mm / 148in | 3766mm / 148in | 3766mm / 148in |
| Minimum ground clearance | 417mm / 16in | 523mm / 20in | 523mm / 20in |
| Wheel base | 3060mm / 120in | 3060mm / 120in | 3060mm / 120in |
| Steering angle | 35° | 35° | 35° |
| Swing angle | 10° | 10° | 10° |
| Braking distance | 3.9m / 153.5in | 3.9m / 153.5in | 3.9m / 153.5in |
| Vibration frequency | 30/35Hz | 30/35Hz | 30/35Hz |
| Nominal amplitude | 2.0/1.0mm / 0.08/0.04in | 1.6/0.8mm / 0.06/0.03in | 1.6/0.8mm / 0.06/0.03in |
| Excitation force | 252/181kN / 57/41kip | 252/181kN / 57/41kip | 252/181kN / 57/41kip |
| (high frequency/low frequency) | 1523mm / 60in | 1735mm / 68in | 1723mm / 68in |
| Diameter of pinch roller | | | |
| Compaction width | 2130mm / 84in | 2130mm / 84in | 2130mm / 84in |
| Oil filling pressure of drive system | 2.5MPa / 25bar | 2.5MPa / 25bar | 2.5MPa / 25bar |
| Minimum pressure of drive system | 41MPa / 410bar | 41MPa / 410bar | 41MPa / 410bar |
| Minimum pressure of vibration system | 32.5MPa / 325bar | 32.5MPa / 325bar | 32.5MPa / 325bar |
| Minimum pressure of steering system | 16MPa / 160bar | 16MPa / 160bar | 16MPa / 160bar |
| Model | F3.8 | F3.8 | F3.8 |
| Type | Turbocharged water cooling and electric control | Turbocharged water cooling and electric control | Turbocharged water cooling and electric control |
| Rated power | 115kW / 154HP | 115kW / 154HP | 115kW / 154HP |
| Rated speed | 2200r/min | 2200r/min | 2200r/min |
| Specification | 23.1–26–12G23TL | 23.1–26–12G23TL | 23.1–26–12G23TL |
| Tier | 12 | 12 | 12 |
| Air pressure | 200kPa / 2bar | 170kPa / 1.7bar | 200kPa / 2bar |
| Drive form | Hydrostatic closed | Hydrostatic closed | Hydrostatic closed |
| Vibration form | Hydrostatic closed | Hydrostatic closed | Hydrostatic closed |
| Travelling brake | Hydraulic | Hydraulic | Hydraulic |
| Parking brake | Mechanical / hydraulic | Mechanical / hydraulic | Mechanical / hydraulic |
| Emergency brake | Mechanical / hydraulic | Mechanical / hydraulic | Mechanical / hydraulic |
| Steering form | Articulated | Articulated | Articulated |
| Steering control | Hydraulic | Hydraulic | Hydraulic |

Appearance and di- mensions



| Dimensions (mm) | A | B | D | H | H2 | K | L | O1 | O2 | S | W |
|-----------------|------|------|------|------|------|-----|------|----|----|----|------|
| XS125 | 3060 | 2300 | 1523 | 2340 | 2990 | 417 | 5990 | 85 | 85 | 25 | 2130 |
| XS125PD | 3060 | 2300 | 1735 | 2440 | 3145 | 523 | 5990 | 85 | 85 | 25 | 2130 |
| XS125PD II | 3060 | 2300 | 1723 | 2440 | 3145 | 523 | 5990 | 85 | 85 | 25 | 2130 |

| Dimensions (in) | A | B | D | H | H2 | K | L | O1 | O2 | S | W |
|-----------------|-----|----|------|----|-----|----|-----|-----|-----|---|----|
| XS125 | 120 | 91 | 60 | 92 | 118 | 16 | 236 | 3.3 | 3.3 | 1 | 84 |
| XS125PD | 120 | 91 | 68 | 96 | 124 | 21 | 236 | 3.3 | 3.3 | 1 | 84 |
| XS125PD II | 120 | 91 | 67.8 | 96 | 124 | 21 | 236 | 3.3 | 3.3 | 1 | 84 |

Optimum Services , XCMG Guaranteed



XCMG approved attachments



Genuine parts



Extension of warranty



Financial solutions



Maintenance contract



Telematics



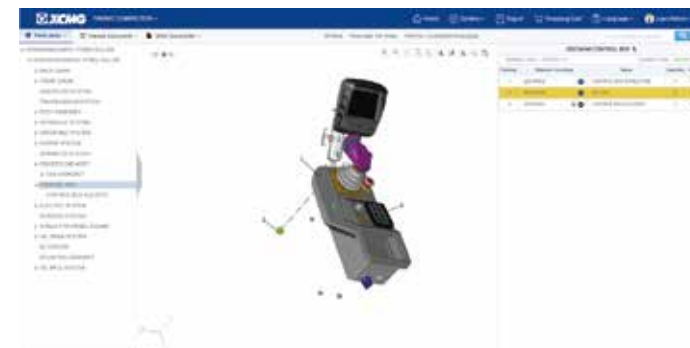
Professional Integrated Complete Solutions

XCMG group has built a strong reputation based on the quality, reliability and durability of its construction machinery. What's more, XCMG has gradually established a service network to constantly provide its local integrated and highly efficient complete solutions for all customers.

Full Range of Services Ready for you

In order to respond to your needs as fast as possible, XCMG experts are on their way to your job site from one of our facilities near you. Full range of services are available in order to reduce your total cost of ownership and increase your revenue.

XCMG Global Spare parts System



Mobile cranes



Excavators



Aerial work platforms



Wheel loaders



Road machinery



XCMG

XCMG FOR YOUR SUCCESS

