

All Rights Reserved

Materials and specifications are subject to change without notice.
Featured machines in photos may include additional equipment. See your XCMG dealer for available options.



XE370D

Hydraulic Excavator



Advanced Configuration

Ecological and economical

- ▶ Customized XCMG exclusive low-speed and high-torque engine can provide excellent power output
- ▶ Large diameter multi-way control valve reduces internal pressure loss of the channel and improves maneuverability
- ▶ Smart electronic control system can achieve dynamic balance between power and hydraulic system

Multiple applications

- ▶ Different boom, stick and bucket combinations to maximize utilization of different conditions
- ▶ Multi-functional machine system meets various job requirements such as digging, crushing, and thumb clamp

Excellent after-sales service

- ▶ Global after-sales service system and quick response mechanism
- ▶ Real-time technical consultation and maintenance

Convenient maintenance

- ▶ LED color display reminds you with machine maintenance information timely
- ▶ Daily maintenance points are within reach from the ground
- ▶ Dual fuel filter element can protect fuel system
- ▶ Centralized lubrication design concept makes lubrication easier

Comfortable operational experience

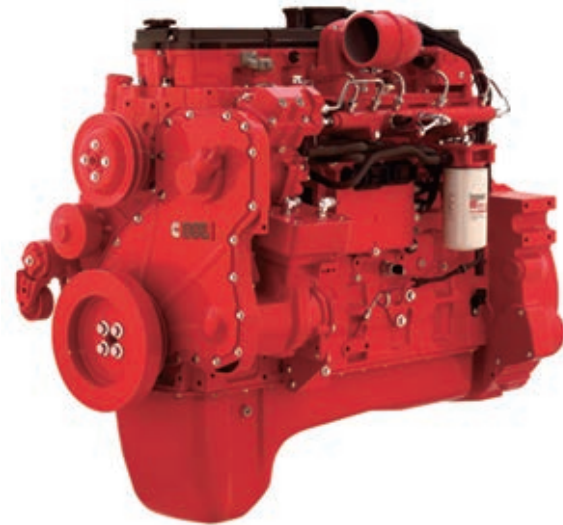
- ▶ High-performance silicone oil shock absorber improves comfort.
- ▶ Air Conditioner and Heater ensure the appropriate temperature
- ▶ Integrated control panel and large display screen provide multiple information

Safe and durable

- ▶ ROPS cab improves safety
- ▶ Strengthened key stress-bearing parts of chain links
- ▶ Full-size heavy-duty reinforced chassis structure can ensure the stability of the whole machine



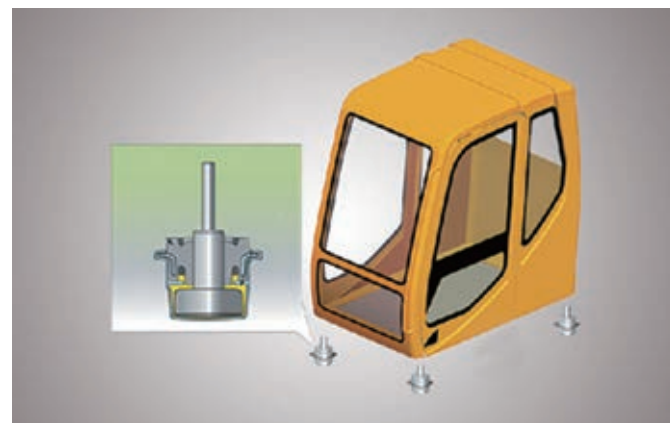
Ecological And Economical



- ▶ The low-speed and high-torque engine can provide excellent power output, improves combustion efficiency, more energy efficient and environmentally friendly.

- ▶ Equipped with a new large diameter multi-way control valve, hydraulic system is quick and efficient; Valve element is further optimized to reduce internal pressure loss of the channel, improve maneuverability and efficiency of the composite operation.
- ▶ Intelligent electronic control system can achieve optimal matching control of engine speed and hydraulic pump, and dynamic balance between power and hydraulic system.

Comfortable And Safe



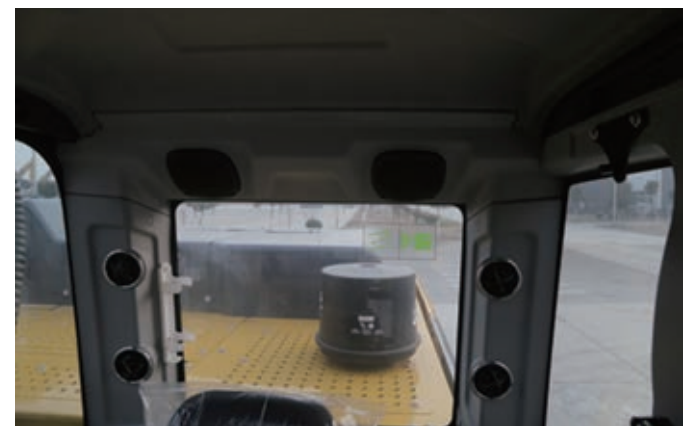
- ▶ High-performance silicone oil shock absorber with internal damping spring will effectively isolate shock waves in specific frequency bands for improved comfort.

- ▶ The new cab is complemented by luxurious interiors. The panoramic sunroof has a wider view and operation buttons are centrally arranged to fully upgrade the driving experience.



- ▶ Large-screen color LED display, with digital display of machine related information, has good visual effect and more human-machine interface.

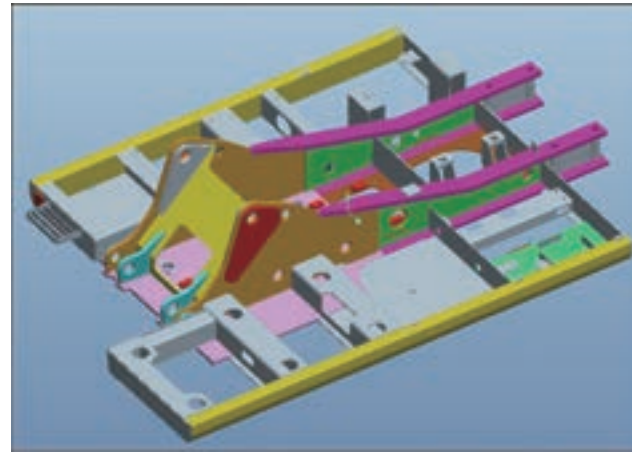
- ▶ High-power air conditioner and heater, equipped with multi-channel stereo air supply system and advanced sound system, is convenient and comfortable for all kinds of operation at your fingertips.



Reliable And Durable

- ▶ Adopt a large number of special technologies and imported high-strength, wear-resistant steel to develop and manufacture structural parts; It will greatly enhance strength of products and prolong their service life, so as to cope with adverse working conditions easily.

- ▶ Full-size heavy-duty reinforced chassis, along with reinforced working equipment, can ensure the stability of the whole machine while satisfying the powerful digging force.

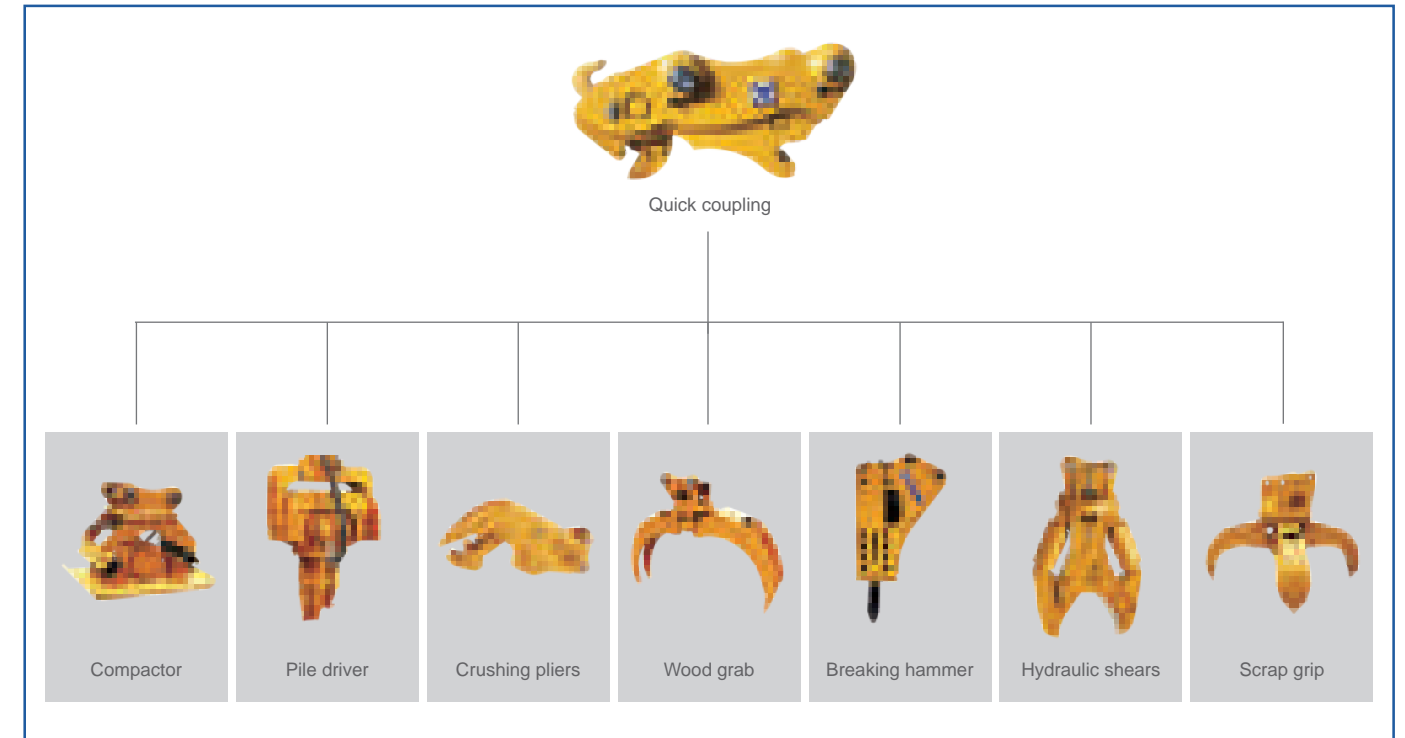


- ▶ The reinforced working equipment, combined with the high-pressure system, can ensure that the machine possesses the most powerful digging force among the same size of machines, which can easily cope with various working conditions and meanwhile guarantee long service life.
- ▶ ROPS Cab can be equipped with top guard, front guard and side guard to meet anti-falling requirements, and thus to further improve cab safety.



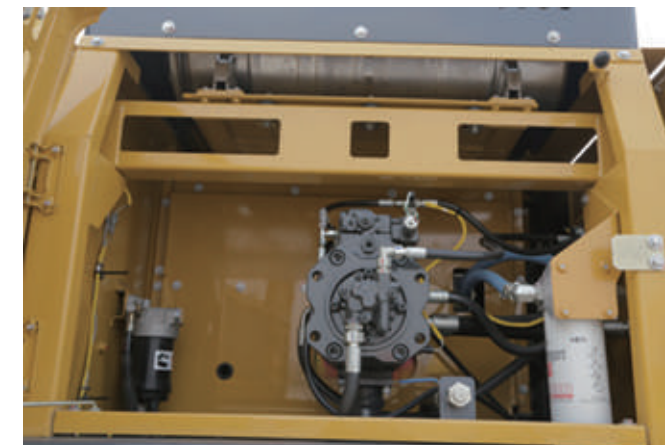
Multiple Application Conditions

- ▶ Hammer and quick coupler are optional, which can widen the applications of the machine; standard 3.2m arm, optional 2.67m/2.9m short arm, standard 1.6m³ standard reinforcement bucket, optional 1.4m³/ 1.5m³ rock bucket and 1.8m³ earth working bucket.
- ▶ The first-rate digging force can fully apply to complex construction environment.



Maintenance And Service

- ▶ New LED color display with remote fault diagnosis function, operation process will be recorded at any time, machine maintenance will be timely reminded, which makes the users use at ease.
- ▶ Daily maintenance points are within reach: Whether it is fuel filter, oil filter, pilot filter or air filter, you can directly service it on the ground.
- ▶ Two-stage fuel filter can protect fuel system; oil water separator has higher particle filtration accuracy and better oil adaptability.
- ▶ The lubrication points of the working equipment are in the form of centralized lubrication, which makes lubrication easier.



As a large-tonnage excavator, the XE370D uses a customized XCMG exclusive low-speed and high-torque engine, achieving optimal fuel injection control and improved combustion efficiency for greater energy and environmental protection. The new cab is complemented by luxurious interiors. The panoramic sunroof has a wider field of view and the operation buttons are centrally arranged to fully upgrade the driving experience. The reinforced working device, combined with the high-pressure system design, ensures that the machine has the most powerful digging force in the same class of machines, and can easily cope with various working conditions. Can be widely used in municipal construction, highway and bridge construction, digging trenches, farmland water conservancy construction and other projects.



Standard Configuration

Name of equipment	XE370D
Isuzu engine (satisfying three-stage emissions from the US or Europe)	
Kawasaki (main pump, main valve, swing motor) , Nabtesco travel motor	
AM/FM radio + USB interface	
3.2m standard arm	
Standard bucket	
FOPS&ROPS anti-falling, anti-rolling air-conditioned cab,	
Hengli hydraulic cylinder, boom and stick with explosion-proof valve	
Pilot hydraulic system with mode switching valve	
Air suspension seat (can carry 150 kg)	
With lock start switch, power main switch (installed on the ground outside the machine can be touched), emergency stop button (with an emergency stop switch in the cab, an emergency stop switch on the outside, the ground can be touched) Install the guardrail	
Reversing image; walking and slewing alarm device, work light, reversing alarm work light	
Miller (twin lock, double lock) hydraulic quick change and pipeline	
Hammer bidirectional pipe	
Cab hoisting performance table	
Multi-tool control system installed in the whole machine	
Pressure flow monitor (adjustable)	

Optional Configuration

Name of equipment	XE370D
Front and top protection net	
XCMG break hammer	
XCMG grab	
800 mm (31 ") double-rib track shoe	

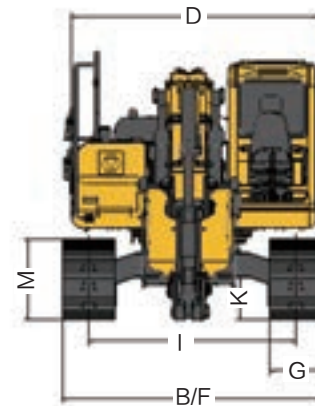
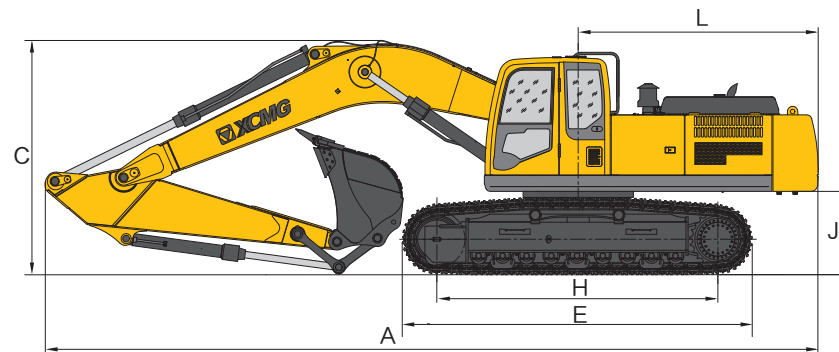
Main Specifications

Item	unit	Main specifications	
Model	/	XE370D	
Operation weight	Kg	36800	
Bucket capacity	m ³	1.6~1.8	
Engine	Model	/ ISUZU GH-6HK1XKSC-03	
	Direct injection	/	√
	Four strokes	/	√
	Water cooling	/	√
	Turbo-charging	/	√
	Air cooled	/	√
	No.of cylinders	/	6
	Rated power/speed	kw/rpm	212/2000
	Torque/swing speed	N.m/rpm	1080/1500
	Displacement	L	7.79
Main performance	Travel speed (H/L)	km/h	5.4/3.2
	Grade ability	%	70
	Rotary speed	r/min	9.7
	Ground pressure	kPa	66.7
	Bucket digging force	kN	263
	Arm digging force	kN	188
	Main pump	--	K5V160DTH
Hydraulic system	Rated flow of main pump	L/min	2×304
	Main safety valve pressure	MPa	34.3/37
	Pressure of pilot system	MPa	3.9
Hydraulic system	Fuel tank capacity	L	660
	Hydraulic tank capacity	L	350
	Engine oil capacity	L	30

Item	unit	Main specifications
Standard	Length of boom	mm 6400
	Length of arm	mm 3200
	Bucket capacity	m ³ 1.6
Optional	Length of arm	mm 2670
	Bucket capacity	m ³ 1.6strengthen bucket/1.8strengthen bucket

Dimensions

Item	Unit	Parameters
A Total length	mm	11388
B Total width	mm	3190
C Total height	mm	3530
D Width of platform	mm	3050
Apperance size	E Track length	mm 5035
	F Total width of chassis	mm 3190
	G Width of crawler	mm 600
	H Wheel base of crawler	mm 4040
	I Track gauge	mm 2590
	J Ground clearance of counterweight	mm 1197
	K Min. ground clearance	mm 500
	L Min. rear-end swing radius	mm 3700



Working Range

Item	Unit	Parameters
A Max. digging height	mm	10445
B Max. dumping height	mm	7287
C Max. digging depth	mm	7423
Working scope	D Max. digging depth at the range of level 8 feet	mm 7266
	E Max. vertical digging depth	mm 6776
F Max. digging radius	mm	11114
G Min. swing radius	mm	4369

